



SYST'AM® P371C / HR-FOAM CUSHION

ANATOMIC MOULDED CUSHION MADE OF HIGH RESILIENCE FOAM

MATERIALS

40
kg/m³



HR foam



Removable
POLYMAILLE®
cover

NF EN ISO 597 - 1 & 2

Cleaning of foam:



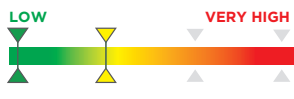
(Do not immerse in water)

Cleaning of the cover:



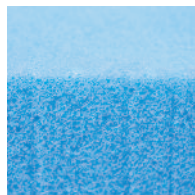
INDICATIONS

Risk



P371C / HR-foam-Cushion can be used, when:

- Seated position is necessary resulting from diseases or handicap and there is at the same time an increased risk of pressure sore.

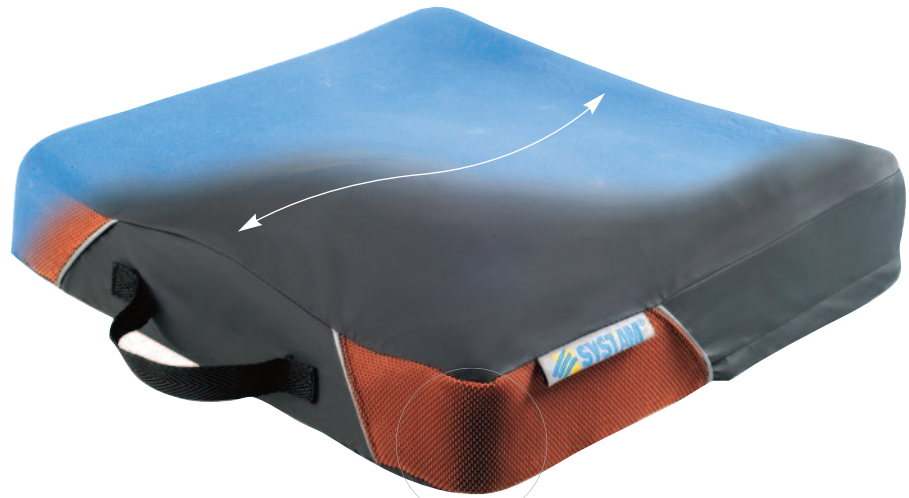


MADE OF POLYURETHAN HR-FOAM

→ The high bearing capacity of the SYST'AM® high resiliency foam (HR foam) with high density (40 kg/m³) confers an excellent resistance against sagging effect.

SKIN EFFECT OF THE MOULDING PROCESS

→ True barrier, which protects the product.



BREATHABLE COVER (IMPERMEABLE TO LIQUIDS)

- Adapted for incontinence;
- Reduces the maceration effects

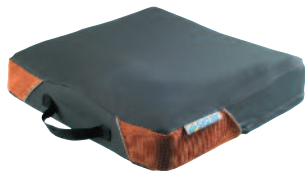
AN ANTI-SLIP BASE

→ Avoiding any sliding of the cushion from the support.

ANATOMICAL SHAPE WITH RAISED LATERAL EDGES AND FRONT-BACK SLOPE

- Improves the positioning, the stability and the comfort of the patient;
- Increases the contact surface and therewith reduces the pressures

AVAILABLE VERSIONS



SYST'AM® P371C / HR-Foam Cushion
With POLYMAILLE® cover.

| DESIGNATION | ITEM CODE | (W x L - cm / inches) | min - MAX (kg / lbs) |
|-------------------------|---------------|---------------------------|-----------------------------|
| P371C / HR-Foam cushion | P371C42421HW | 42 x 42 cm / 17 x 17" | 40 - 100 kg / 88 - 220 lbs |
| | P371C45421HW | 45 x 42 cm / 18 x 17" | 40 - 110 kg / 88 - 242 lbs |
| | P371C45461HW | 45 x 46 cm / 18 x 18" | 60 - 130 kg / 132 - 286 lbs |
| | P371C51461HSW | 51 x 46 cm / 20 x 18" | 60 - 150 kg / 132 - 330 lbs |

