



R82[®]

Flamingo potty frame

Comfortable potty training and bathtime fun

R82 Flamingo potty frame

The potty frame is an accessory to the Flamingo seat, which provides several more uses for the already highly adaptable Flamingo. Simply mount our existing Flamingo seat on the potty frame and it can be used as a freestanding device for potty training or bathtime fun. The inlay of the seat provides comfort for the user while the small size makes it fit into almost every bathing situation or room.

Features

Upholstery

A good seating position is easily obtained in the comfortably shaped Flamingo seat with inlays

Accessories

The Flamingo seat has a range of accessories.

Back recline

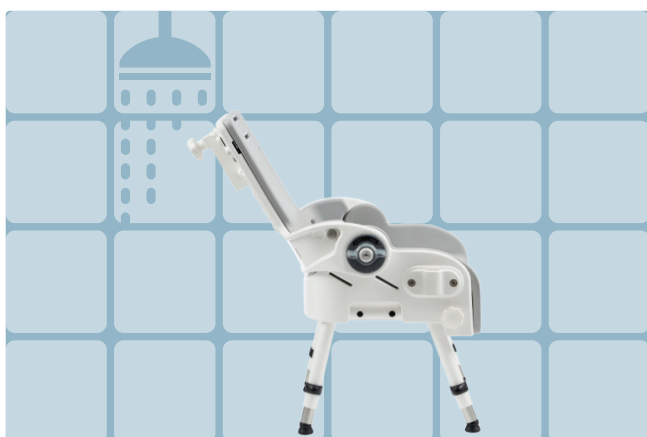
Back recline option for the child's comfort and positioning

Small frame

Simple and lightweight frame that features height adjustability



Versatility



Bathtime is fun and relaxing

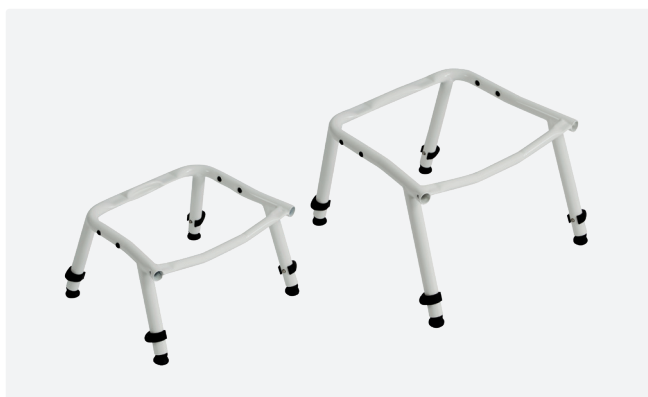
Flamingo seat with a low potty frame solution is the perfect choice if the bathroom demands a smaller bath chair solution. The inlay and the back recline function make it very easy to be comfortable and relaxed.



Potty training

The Flamingo potty chair solution is designed to assist the child in potty training. The seat comes with an inlay and has numerous accessory options that make it easy to obtain a proper and comfortable seating position.

Frame and seat combination



Low, height adjustable frame in two different sizes



Size 1 frame fits the size 1 Flamingo seat. Size 2 frame fits the size 2 Flamingo seat. Flamingo seats available with grey or blue PUR inlay

Accessories

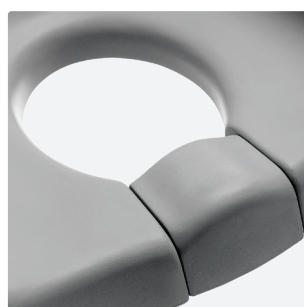
Numerous accessory options can be chosen for the Flamingo seat. You can explore some of the accessories below and see the complete Flamingo seat and its range of accessory options on our website.



Sides w/upholstery
88011x



Commode pan
88012x



Splash guard, low
88019x



PU inlay with wider sides
88016x



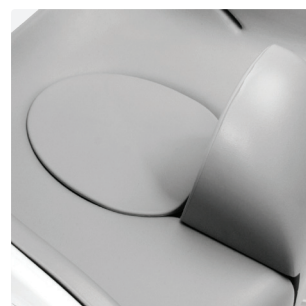
Back extension
880118



Rod for mounting back extension
880120







Armrests/tray
88013x



Seat infill
88018x

Measurements

| Flamingo potty frame | | size 1 | size 2 |
|---|-----------------------------------|---------------|----------------|
|  | Approximate total user height | 990 - 1150 mm | 1140 - 1300 mm |
|  | Overall width, frame | 320 mm | 360 mm |
|  | Overall Length, frame | 295 mm | 400 mm |
|  | Effective seat width | 240 mm | 280 mm |
|  | Effective seat depth | 250 mm | 290 mm |
|  | Backrest height | 350 mm | 380 mm |
|  | Seat surface height at front edge | 190 - 235 mm | 250 - 295 mm |
|  | Back width, top of backrest | 200 mm | 220 mm |
|  | Overall height | 535 - 580 mm | 620 - 665 mm |
|  | Backrest angle | -90° - 30° | -90° - 30° |
|  | Max user mass | 35 kg | 50 kg |

Read more about the Flamingo seat and its range of accessory options on our website

Flamingo Potty Frame_Brochure B3605_01_INT | Reserving our rights for printer's error or discontinued products. Please find an updated edition on our website etac.com © R82 A/S All rights reserved.

Flamingo range of possibilities

Our Flamingo family is one of the most versatile products on the market with numerous configurations available.



Flamingo High-low



Flamingo



Flamingo potty frame



Flamingo seat on a toilet



Flamingo seat for bath tub

R82 A/S

+45 79 68 58 88

R82@etac.com

www.etac.com

etac®
Creating Possibilities