

R82 Flamingo Seat optional accessories



Potty frame

Low frame for shower or potty training. Suitable for R82 Flamingo seat size 1 and 2.

The potty frame is an accessory to the Flamingo seat, which provides several more uses for the already highly adaptable Flamingo. Simply mount our existing Flamingo seat on the potty frame and it can be used as a freestanding device for potty training or bathtime fun. The inlay of the seat is available in both grey and blue and provides comfort for the user while the small size makes it fit into almost every bathing situation or room.



Suctions cups

The Flamingo seat can be mounted in the bathtub by using suction cups, opening up new possibilities for rich bathing experiences, where the child can explore, play and be surrounded by water. *Suction cups require holders for commode pan and potty rings to be mounted.



Fitting for toilet mounting

For mounting the Flamingo seat on an ordinary toilet



Wider Seat Upholstery, with sides

For comfort and reduced seat width - also making the standard hole narrower.



Sides with upholstery

Provide moderate torso control and positioning. Available in grey or blue.

R82 Flamingo Seat optional accessories



Back extension

Increase the backrest height with 10 cm.

&

Rod for mounting back extension



Back reinforcement kit

For locking the back recline on size 3 and 4



Armrests

Provides arm support. Cannot be used together with sides for back or Swing-away armrest/tray.



Swing-away armrest/tray

Provides upper arm support and swings away for transfer



Seat infill

For covering the opening in the seat. Available in grey or blue.

Not compatible with inlay with wide sides.



Splash guard, low

Provides easy access to the seat for users or situation where a high splash guard is not warranted.



R82 Flamingo Seat optional accessories



Potty ring

For use over the toilet. Can be used on both the Flamingo and Flamingo High-low



Commode pan

A commode pan helps to create a flexible and convenient toileting solution.



Lid for commode pan

The lid is used to cover the content of the commode pan. It retains odors and decreases the risk of spillage.



Push brace

Provides a secure point to maneuver the chair.



Castors

Lockable castors, set of 4 pcs. For safety and stable transfers.



Support rod kit

For increased strength in the seat tilt function.



R82 Flamingo Seat optional accessories



Curved head support

The curved head support is covered with PU and is slightly curved from the midline to the sides, primarily providing support to the back of the head. It is suitable for users who need temporary support or require to be supported in a tilted position.

Size Guide

Small
or
medium

- Configurable product. Please contact us to find the head support that fits your child's needs.

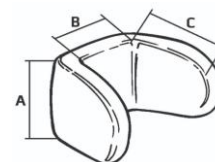


Head support no. 1.

A:10 x B:12 x C:12 cm

Narrow head support with deep sides. Well suited for small users that need support sideways.

Size Guide



- Configurable product. Please contact us to find the head support that fits your child's needs.

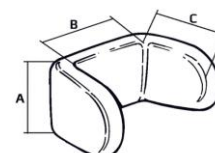


Head support no. 2

A:10 x B:16 x C:11 cm

Wider head support with deep sides. Well suited for users that need lateral support.

Size Guide



- Configurable product. Please contact us to find the head support that fits your child's needs.

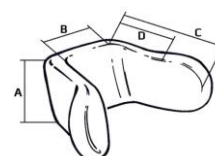


Head support no. 3

A:10.5 x B:13 x C:15 x D:8 cm

Narrow head support with big sloping sides. Well suited for users with poor head control.

Size Guide



- Configurable product. Please contact us to find the head support that fits your child's needs.

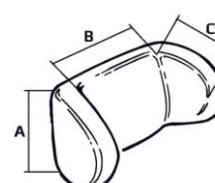


Head support no. 4

A:10 x B:15 x C:7 cm

Wide head support with small sides for users with better head control. Especially used for neck support.

Size Guide



- Configurable product. Please contact us to find the head support that fits your child's needs.

R82 Flamingo Seat optional accessories



Fixed side supports (Lateral Trunk Supports)

Depth 9 cm x Thickness 10 cm

or

Depth 10 cm x Thickness 14 cm

For additional support and positioning.

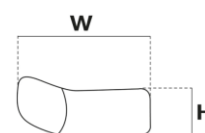


Curved cushion no.1 (Lateral Trunk Supports)

H:9 x W:19 cm

The curved cushions are used when sideways and forward support is needed. This is a configurable product. Contact your local dealer to find the side support that fits your child's needs.

Size Guide

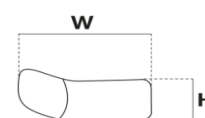


Curved cushion no.2 (Lateral Trunk Supports)

H:6.5 x W:17 cm

The curved cushions are used when sideways and forward support is needed. This is a configurable product. Contact your local dealer to find the side support that fits your child's needs.

Size Guide

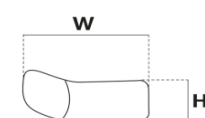


Curved cushion no.3 (Lateral Trunk Supports)

H:6.5 x W:15 cm

The curved cushions are used when sideways and forward support is needed. This is a configurable product. Contact your local dealer to find the side support that fits your child's needs.

Size Guide





R82 Flamingo Seat optional accessories



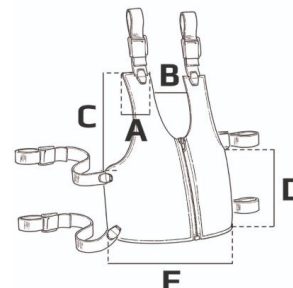
Net vest

Supports the upper body and provides a firm and flexible hold against the chest and the sides of the trunk. Suitable for bath and toileting situations

Available Sizes:

Size 0	3½ x 6½ x 14 x 9 x 28 cm
Size ¾	4 x 6½ x 14½ x 11 x 28 cm
Size 1	6 x 6½ x 18 x 13 x 34 cm
Size 2	6½ x 9 x 24 x 14½ x 40 cm
Size 3	7 x 12 x 28 x 15 x 46 cm
Size 4	7 x 17 x 35 x 19 x 49 cm

Size Guide



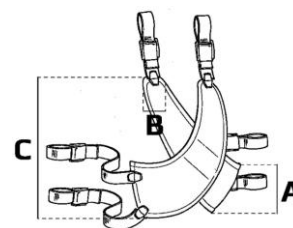
Net cross vest

Supports the upper body and provides a firm and flexible hold against the chest and the sides of the trunk. Suitable for bath and toileting situations

Available Sizes:

Size 0	A: 11 x B:1.5 x C:28 cm
Size 1	A: 13 x B:1.5 x C:31 cm
Size 2	A: 14 x B:1.5 x C:33 cm
Size 3	A: 16 x B:6 x C:39 cm
Size 4	A: 19 x B:6 x C:47 cm

Size Guide



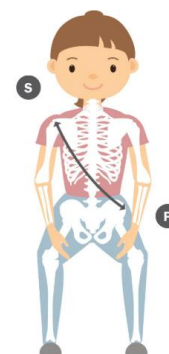
Torso vest

Supports the upper body and provides a firm and flexible hold against the chest.

Available sizes:

Extra small	20 – 31.5 cm
Small	26 – 34.5 cm
Medium	34.5 – 45 cm
Large	45 – 53 cm
Extra large	53 – 62 cm
Extra extra large	52 – 60 cm

Size Guide



Cross vest

Supports the upper body and provides a firm and flexible hold against the chest and the sides of the trunk.

Available sizes:

Extra small	20 – 31.5 cm
Small	26 – 34.5 cm
Medium	34.5 – 45 cm
Large	45 – 53 cm
Extra large	53 - 62 cm

Size Guide





R82 Flamingo Seat optional accessories



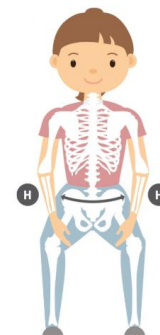
Y-hip belt (4 point hip belt)

Supports the pelvis and provides a pull down and back.

Available sizes:

Extra small	17 – 32 cm
Small	21 – 35 cm
Medium	25 – 41 cm
Large	32 – 44 cm
Extra large	41 – 52 cm

Size Guide



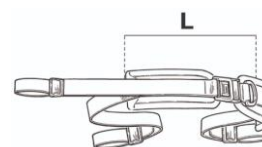
Neoprene hip belt (2 point hip belt)

Supports the pelvis and provides a pull down and/or back.

Available sizes:

Size 1	L: 27 - 37 cm
Size 2	L: 31 - 42 cm
Size 3	L: 45 - 55 cm

Size Guide



Ankle straps

Helps limit movement of the feet and legs and position the feet.

Available sizes:

Extra small	16 - 23 cm
Medium	23 - 31 cm
Extra Large	29 - 38 cm

Size Guide



Foot straps

A: 56 cm

These straps are used to stabilize the user's feet on the footplate. Available with velcro or plastic lock.

Size Guide

